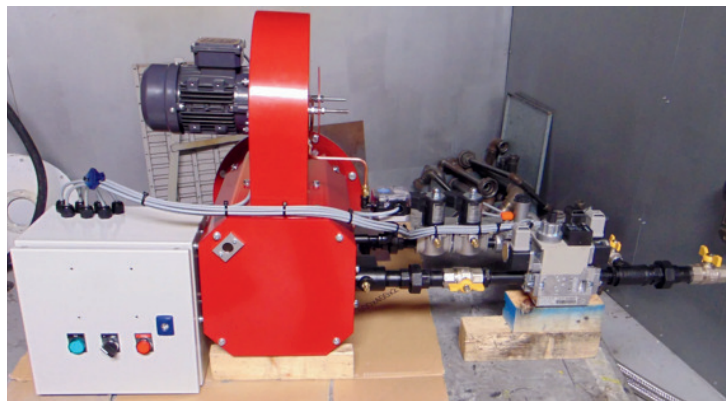
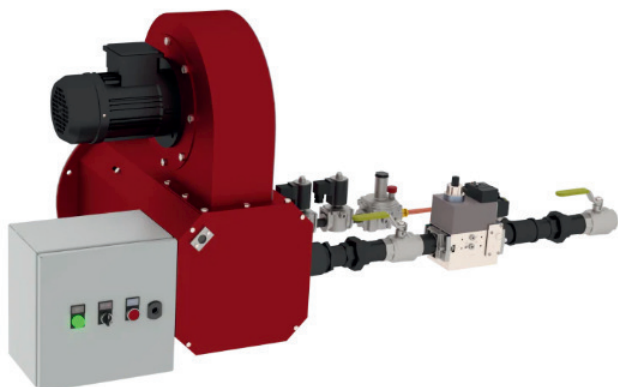


# TFR PACKAGE BURNER

The TFR burner series of packaged gas burners have been specifically designed for the firing of immersion tubes installed in liquid tanks.



## Typical Applications

- Anodising Lines
- Quench Tanks
- Spray Tanks
- Chem Coat
- Dip Tanks
- Fryers
- Vats

## Technical Feature

- Turndown Ratio : 30:1
- Capacity : 50kW to 750kW and available in on-off and high-low versions
- Fuel Types : Natural gas , LPG

