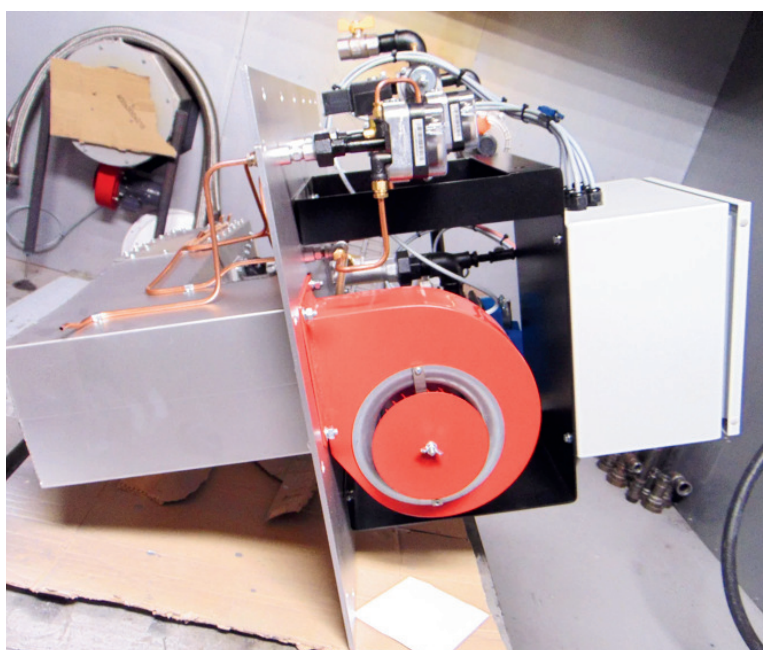
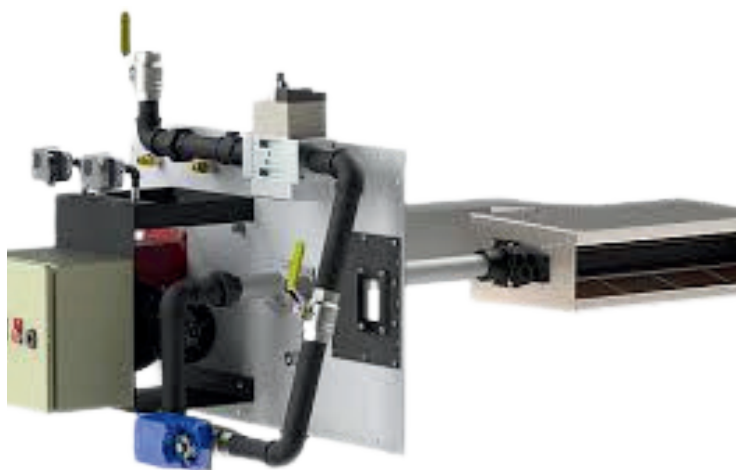
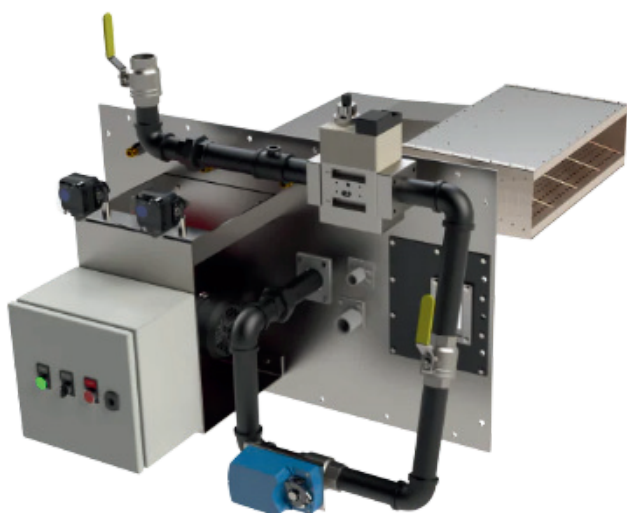


# RSP Burner

The RSP series of gas burners are pre-packaged, fan assisted units designed to suit virtually all types of gas fired applications where recirculated air is utilised; typical applications include the firing of industrial ovens and dryers.



## Typical Applications

- Industrial Dryers
- Industrial Ovens
- Ceramic Dryers

## Technical Feature

- Turndown Ratio : 40:1
- Capacity : 150KW to more than 20MW
- Fuel Types :Natural gas , LPG , Low calorific value gases